

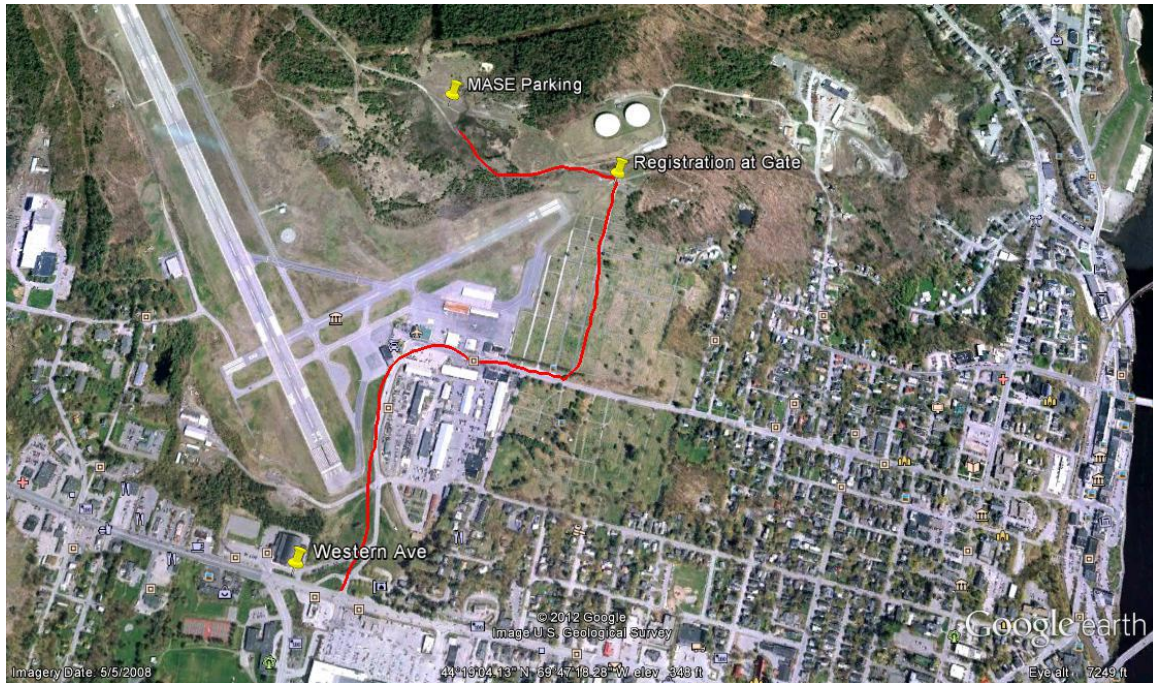


2012 MASE FIELD DAY

WHEN: Thursday, September 27, 2012 (8am – mid-afternoon)
WHERE: Behind Airport/Mt Hope Cemetery, Augusta, Maine
COST: \$10 for MASE members, \$15 all others
Free for Students Enrolled in College Soils Classes
*PAY AT THE DOOR & LUNCH WILL BE PROVIDED

SCHEDULE: 8 to 12 → Test Pit Review (at leisure)
12 to 1 → Lunch (Pizza, Soda, & Chips)
1 to END → Discussion of Test Pits

*Full day attendance at this workshop provides 6.0 PDH's to Licensed Site Evaluators



Traveling North on I-95: Driving north on the Maine Turnpike (I-95) take the US 202/ME-17E/ME-100 exit toward Augusta. Continue east on U.S. Route 202/ME-11/ME-17E and travel about .5 a mile. Airport Road will be on the left at the light past the Augusta Army.

Traveling South on I-95: Take Exit 109A in Augusta. Continue east on U.S. Route 202/ME-11/ME-17E and travel about .5 a mile. Airport Road will be on the left at the light past the Augusta Army.