



2013 MASE FIELD DAY

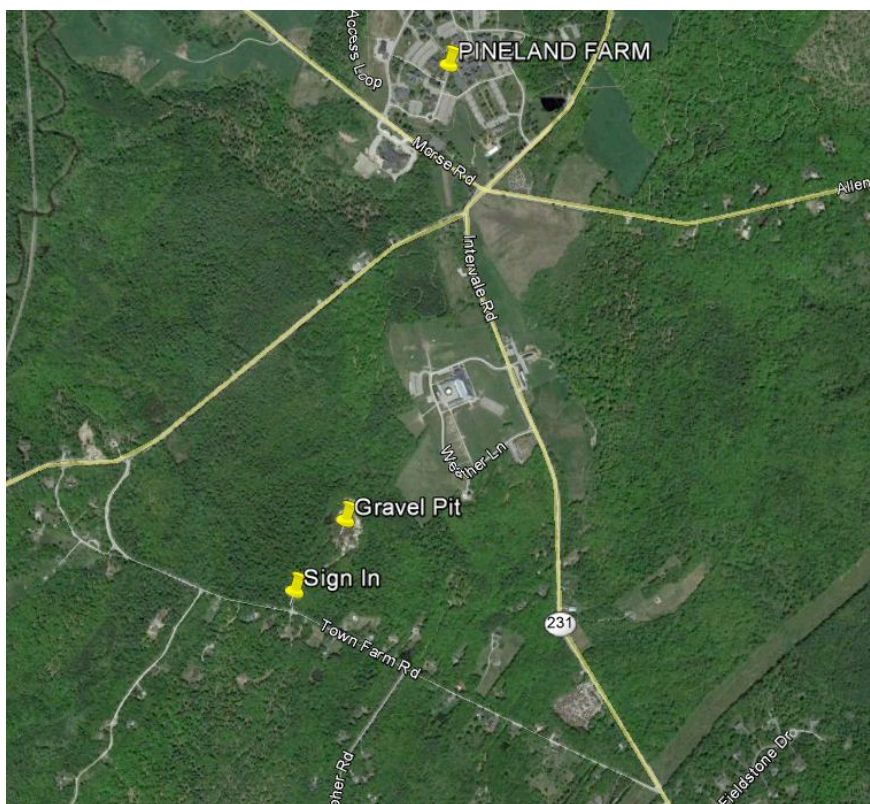
WHEN: Thursday, September 26, 2013 (8am – mid-afternoon)
WHERE: Pineland Farms Area, New Gloucester, Maine
COST: \$10 for MASE members, \$15 all others
Free for Students Enrolled in College Soils Classes
***PAY AT THE DOOR & LUNCH WILL BE PROVIDED**

SCHEDULE: 8 to 12 → Test Pit Review (at leisure)
→ On-going NRCS field demo of Ground Penetrating Radar (GPR) and Electromagnetic Resonance (EMR) technology
12 to 1 → Lunch (Pizza, Soda, & Chips)
1 to END → Discussion of Test Pits
→ Eljen field installation demo in gravel pit

*Full day attendance at this workshop provides 6.0 PDH's to Licensed Site Evaluators

PLEASE CARPOOL MEET AT SIGN-IN ON MAP BELOW

DEPARTMENT IS PROVIDING SHUTTLE VANS



Traveling North on I-95: Driving north on the Maine Turnpike (I-95) take Exit 63. Turn onto Rt 26A/115 toward Gray town center. At light go straight/bear-right staying on Rt 115 (Yarmouth Rd) and go 1.8 miles. Take left on Depot Rd go 2.0 miles. Take right on Town Farm Road. Go 0.5 miles down Town Farm Road. Gravel Pit entrance on left. [Meet here for Parking/Event Info](#)

Traveling South on I-95: Driving south on Maine Turnpike (I-95) take Exit 63. Then follow same directions as if travelling North on I-95 (above).